

3-Way Ball Valve



Manual 3-way Ball Valve



Pneumatic 3-way Ball Valve



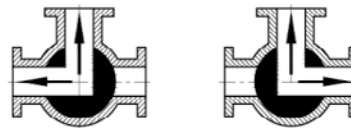
Electric 3-way Ball Valve

Applications:

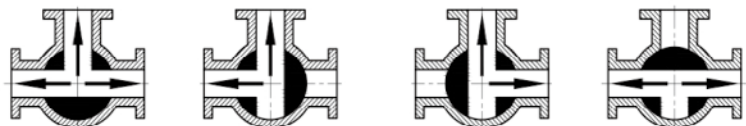
This type of valve is an automatic or manually operated ball valve, which is mainly used in industries such as wine, beverages, dairy, biopharmaceuticals, cosmetics, fine chemicals, electric power, and lithium batteries.

Design Features:

- Simple structure, small size, light weight, no extra space.
- Bright appearance, easy to clean and maintain.
- Small torque, convenient operation and simple maintenance.
- Connection: tri clamp, welding, thread, flange.
- Regardless of the connection, the valve length can be kept the same for easy replacement.
- It can be equipped with pneumatic actuators, electric actuators, intelligent controllers, regulators, etc.
- Material of the part in contact with medium is 304/316L, other part is 304.
- The sealing materials are PTFE, VMQ, EPDM, FPM.
- This type of valve has T-type and L-type for customers to choose to meet the process pipeline layout, as shown in the figure.



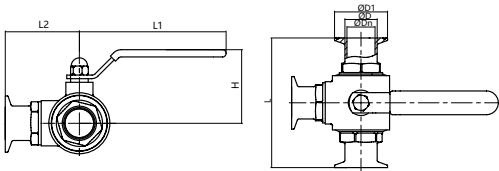
T Port Ball



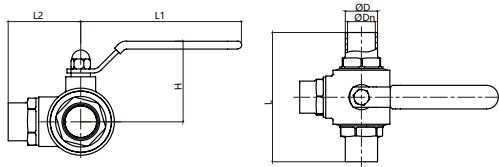
L Port Ball

Sanitary Stainless Steel Ball Valve

J&O FLUID CONTROL CO., LIMITED



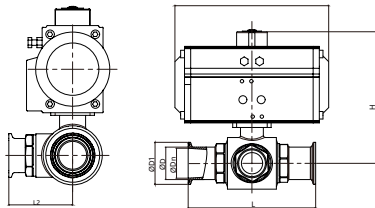
JOV-BHM2009-22



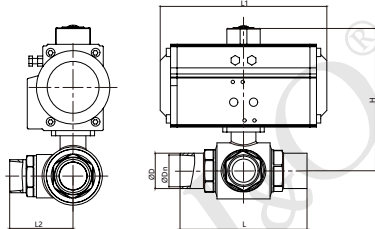
JOV-BHM2009-11

3-way Manual Ball Valve Clamp/Weld End

Size	ØDn	ØD	ØD1	L	L1	L2	H
3/4"	15.8	19.1	25.2	101	120	55	59
1"	22.1	25.4	50.5	120	132	61	70
1.25"	28.5	31.8	50.5	130	136	65	73
1.5"	34.8	38.1	50.5	153	160	73	80
2"	47.5	50.8	64	164	178	84	80
2.5"	60.2	63.5	77.5	200	225	101	104
3"	72.9	76.2	91	210	250	105	116
3.5"	84.7	88.9	106	232	268	115	135
4"	97.4	101.6	119	260	300	130	151



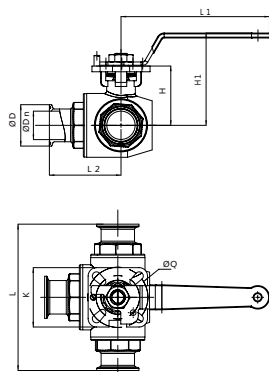
JOV-BHPA2009-22



JOV-BHPA2009-11

3-way Pneumatic Ball Valve Clamp/ Weld End

Size	ØDn	ØD	ØD1	L	L1	L2	H
3/4"	15.8	19.1	25.2	101	155	55	123
1"	22.1	25.4	50.5	120	155	61	132
1.25"	28.5	31.8	50.5	130	168	65	153
1.5"	34.8	38.1	50.5	153	168	73	157
2"	47.5	50.8	64	164	219	84	185
2.5"	60.2	63.5	77.5	200	249	101	211
3"	72.9	76.2	91	210	274	105	236
3.5"	84.7	88.9	106	232	274	115	248
4"	97.4	101.6	119	260	315	130	270



JOV-BHM2010-22

3-Way Full Bore Ball Valve (Korean Type)

Size	ØDn	ØD	L	L1	L2	H	H1	K
3/4"	16	50.5	122	135	61	42.5	79	42
1"	22.1	50.5	152	135	76	59.5	96	50
1.5"	34.8	50.5	175	181	87.5	72.5	113	71
2"	47.5	64	201	181	100.5	81.5	121	71
2.5"	60	77.5	228	181	114	93	134	71